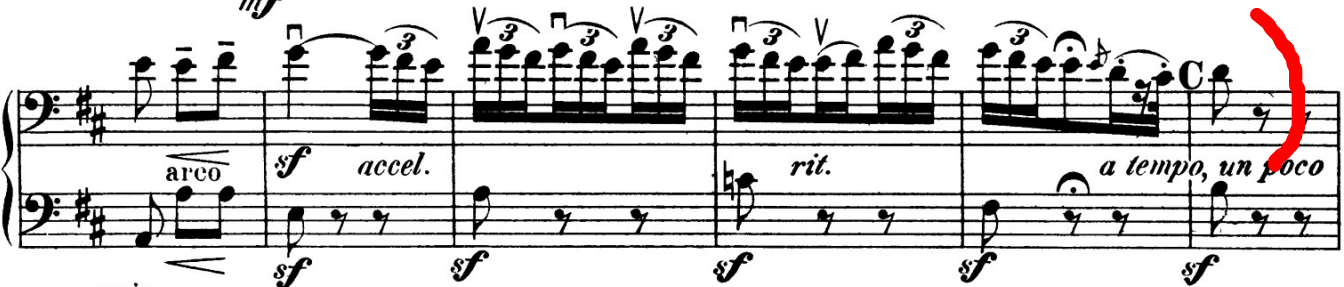
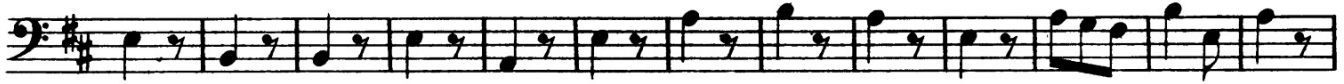


Violoncello.

5

II.

Recit. Lento. Andantino. rit. a tempo



Violoncello.

III.

Andantino quasi Allegretto.

The image displays a musical score for the song "L'Espresso" by Debussy. It consists of a piano accompaniment and a vocal line. The piano part is written in G major, 6/8 time, and is divided into two staves. The vocal line is written in G major, 6/8 time, and is divided into two staves. The score includes various dynamics such as *pp*, *poco cresc.*, *mf*, *dim.*, *p*, *ten.*, *pp*, *unis.*, *cresc.*, *f*, *(sul A)*, *gliss.*, *dolce*, *pp*, *colla parte*, *p*, *sf*, and *div.*. It also includes performance markings such as *divisi (a 2)*, *ten.*, *Soli*, *dolce e espressivo*, *(sul D)*, *(sul A)*, and *B*. A red bracket highlights a section of the piano accompaniment in the third system, and a red bracket highlights a section of the vocal line in the fourth system.